

# MONTHLY MEMBERSHIP PROGRESS REPORT

District 33 Y

Results as of: 5/31/2020

GMT:

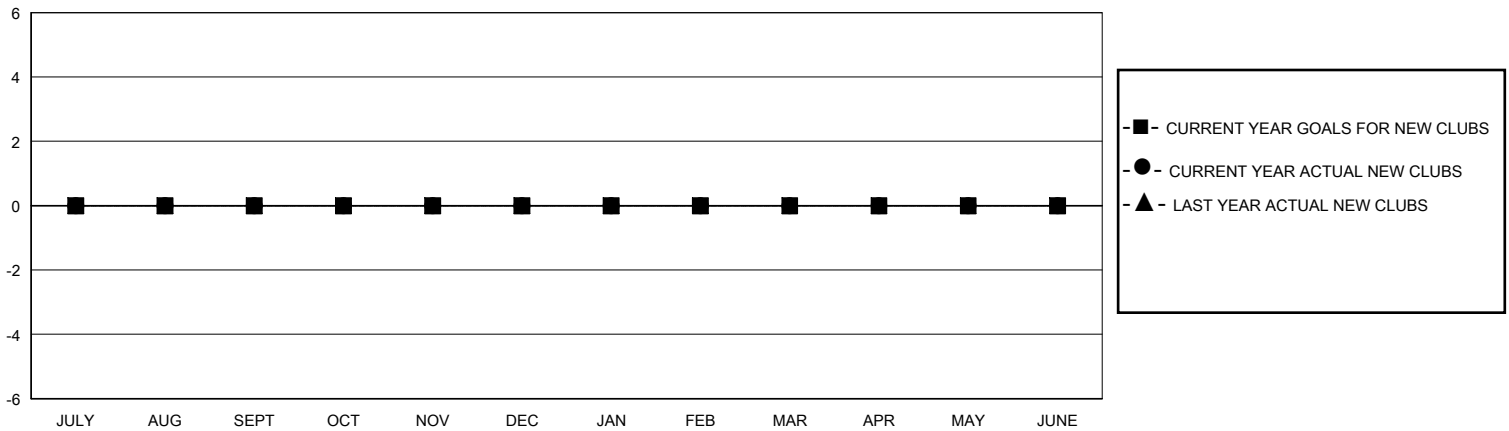
LOCATION MASSACHUSETTS

GMT CA

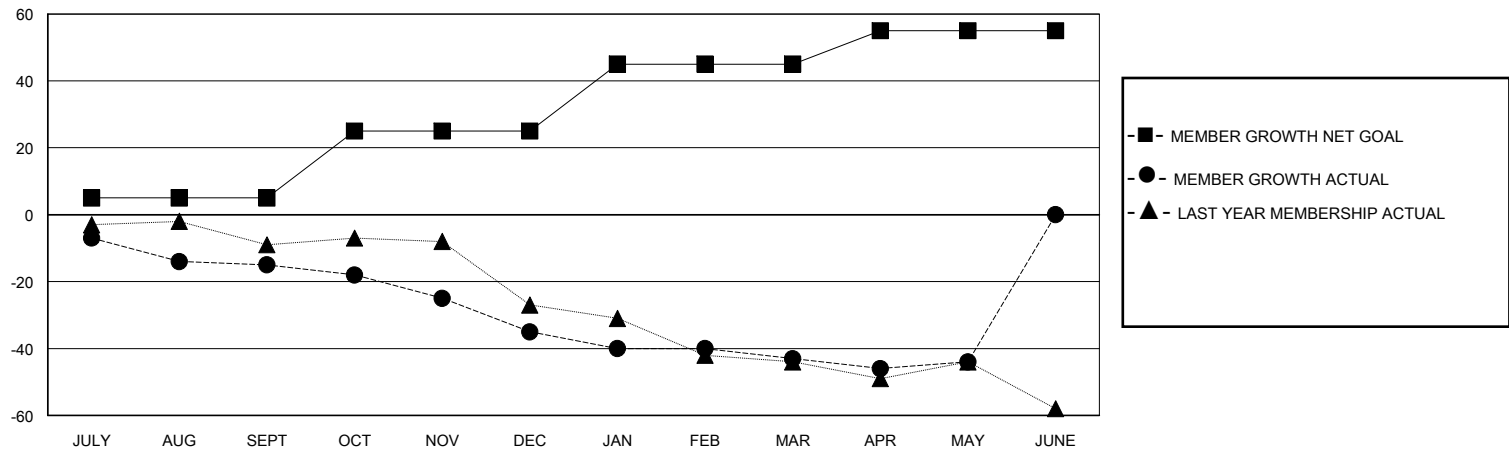
Clubs			
RESULTS FOR 2019-2020			
QUARTER	NEW CLUB GOAL	NEW CLUBS	DROPPED CLUBS
JULY/AUG/SEPT	0	0	1
OCT/NOV/DEC	0	0	0
JAN/FEB/MAR	0	0	0
APR/MAY/JUNE	0	0	0

Members			
RESULTS FOR 2019-2020			
QUARTER	MEMBER GROWTH NET GOAL	MEMBER GROWTH ACTUAL	DROPPED MEMBERS ACTUAL (including transfers)
JULY/AUG/SEPT	5	14	27
OCT/NOV/DEC	20	7	27
JAN/FEB/MAR	20	19	27
APR/MAY/JUNE	10	7	8

GOALS AND ACTUAL NEW CLUBS CUMULATIVE



GOALS AND ACTUAL MEMBERS CUMULATIVE



DROPPED CLUBS: 1	18 CLUBS OF 37 ADDED 1 OR MORE NEW MEMBERS	<b>GENDER DISTRIBUTION</b> MALE 628 (66.60%) FEMALE 315 (33.40%)
<b>DROPPED MEMBERS</b> DECEASED 12 CLUB CANCELLED 8 OTHER 69 TOTAL 89	<a href="#">CLICK HERE FOR CUMULATIVE MEMBERSHIP DATA</a>	TOTAL FAMILY UNIT MEMBERS 196 FAMILY MEMBERS PAYING HALF DUES 100